



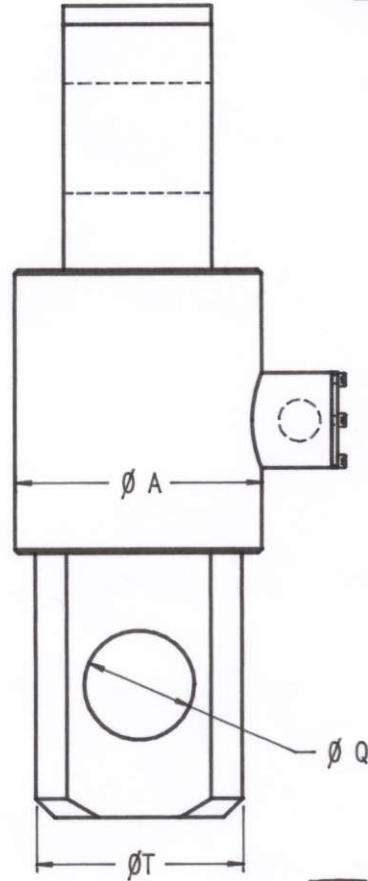
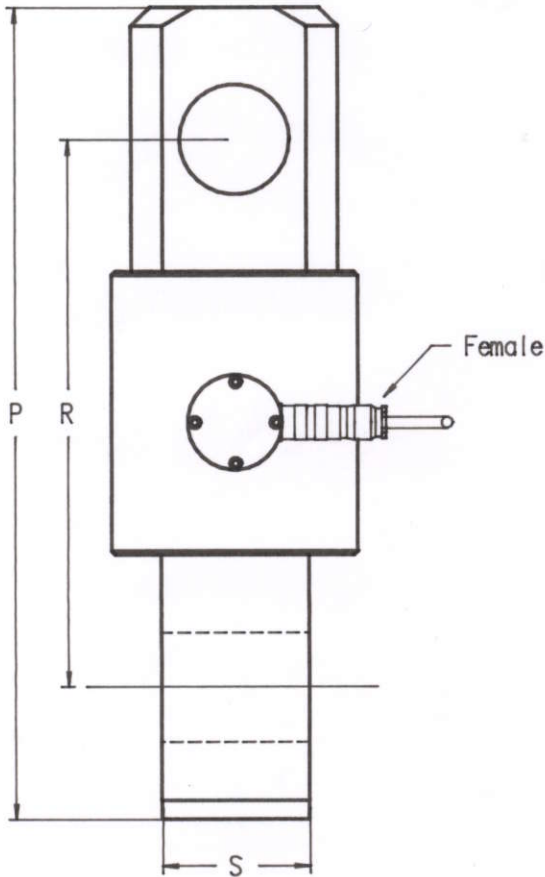
www.sensy.com

LOAD CELLS

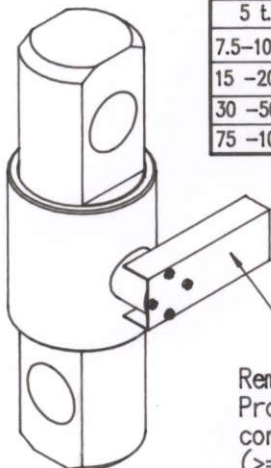
model 5100L stainless steel
 model 5105L alloy steel

TENSION

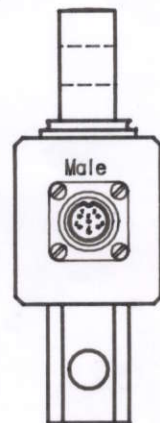
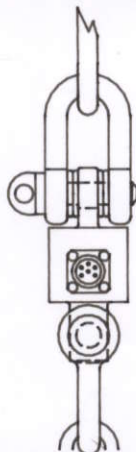
Range 2-100t. IP66



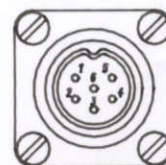
CAPACIT.	∅ A	P	∅ Q (max)	R	S	∅ T	CL	Weight
2 - 3 t	50	144	17	108	20	35	3 m	±1.5 kg
5 t	60	160	24	112	30	45	3 m	± 2 kg
7.5-10 t	80	240	33	170	44	64	3 m	± 5.5 kg
15 -20 t	100	310	42	226	52	86	6 m	±12.8 kg
30 -50 t	130	430	58	290	78	109	6 m	± 25 kg
75 -100t	180	520	80	348	100	149	12 m	± 65 kg



Removable Protection cover connector (>= to 7.5t.)



FEMALE-MALE CONNECTOR D IN 45322



CONTACT N
 1 Excitation - Yellow
 2 Signal + Green
 3 Signal - White
 4 Excitation + Brown
 5 Sense - Grey
 6 Sense + Pink

Except when stated otherwise, standard tolerances are ±0.25 mm for overall dimensions and ±0.1 mm for the distance between axis.